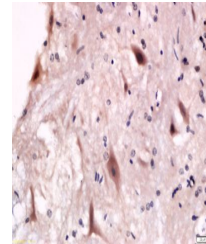


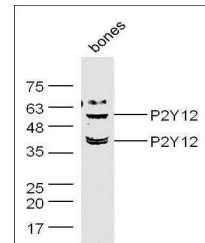
Product Datasheet

P2Y12 antibody (orb158082)

Description	P2Y12 antibody
Species/Host	Rabbit
Reactivity	Mouse
Conjugation	Unconjugated
Tested Applications	ELISA, WB
Immunogen	KLH conjugated synthetic peptide derived from human P2Y12 (141-240/342 aa)
Target	P2Y12
Preservatives	0.01M TBS(pH7.4) with 1% rAlbumin, 0.03% Proclin300 and 50% Glycerol.
Form/Appearance	Liquid
Concentration	1mg/ml
Storage	Shipped at 4°C. Store at -20 °C for one year. Avoid repeated freeze/thaw cycles.
Note	For research use only
Isotype	IgG
Clonality	Polyclonal
MW	39 kDa
Uniprot ID	Q9H244
Expiration Date	12 months from date of receipt.



Immunohistochemical staining of Anterior...



Western blot analysis of extracts from b...