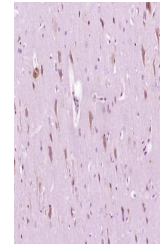


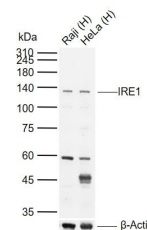
Product Datasheet

IRE1a antibody (orb157705)

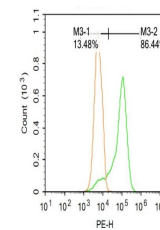
Description	IRE1a antibody
Species/Host	Rabbit
Reactivity	Human, Rat
Conjugation	Unconjugated
Tested Applications	FC, IHC-P, WB
Immunogen	KLH conjugated synthetic peptide derived from human IRE1a (252-260/977 aa)
Target	IRE1
Preservatives	0.01M TBS(pH7.4) with 1% rAlbumin, 0.03% Proclin300 and 50% Glycerol.
Form/Appearance	Liquid: 0.01M TBS(pH7.4) with 1% rAlbumin, 0.03% Proclin300 and 50% Glycerol.
Concentration	1mg/ml
Storage	Shipped at 4°C. Store at -20 °C for one year. Avoid repeated freeze/thaw cycles.
Note	For research use only
Isotype	IgG
Clonality	Polyclonal
Purity	affinity purified by Protein A
MW	105kDa
Uniprot ID	075460
Dilution Range	WB=1:500-2000, IHC-P=1:100-500, Flow-Cyt=1ug/test, IHC-F=1:100-500, ICC=1:100-500, IF=1:100-500, ELISA=1:5000-10000
Expiration Date	12 months from date of receipt.



IHC-P image of Rat brain tissue using IR...



WB analysis of Lane 1: Human Raji cell l...



FC analysis of Raji cell lysate using IR...