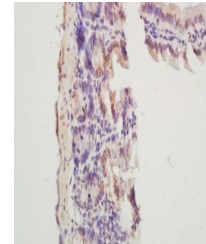


Product Datasheet

Hirudin antibody (orb157550)

Description	Hirudin antibody
Species/Host	Rabbit
Conjugation	Unconjugated
Tested Applications	ELISA, ICC, IF, IHC-Fr, IHC-P
Immunogen	KLH conjugated synthetic peptide Bivalirudin (d-FPRPGGGGNGDFEEIPEEYL)
Target	Bivalirudin
Preservatives	0.01M TBS(pH7.4) with 1% rAlbumin, 0.03% Proclin300 and 50% Glycerol.
Form/Appearance	Liquid
Concentration	1mg/ml
Storage	Shipped at 4°C. Store at -20 °C for one year. Avoid repeated freeze/thaw cycles.
Note	For research use only
Isotype	IgG
Clonality	Polyclonal
MW	2.108 kDa
CAS Number	128270-60-0
Expiration Date	12 months from date of receipt.



Immunohistochemical analysis of formalin...