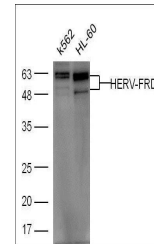


Product Datasheet

HERV-FRD antibody (orb157507)

Description	HERV-FRD antibody
Species/Host	Rabbit
Reactivity	Human
Conjugation	Unconjugated
Tested Applications	WB
Immunogen	KLH conjugated synthetic peptide derived from human HERV-FRD (331-430/538 aa)
Target	ERVFRD-1
Preservatives	0.01M TBS(pH7.4) with 1% rAlbumin, 0.03% Proclin300 and 50% Glycerol.
Form/Appearance	Liquid
Concentration	1mg/ml
Storage	Shipped at 4°C. Store at -20 °C for one year. Avoid repeated freeze/thaw cycles.
Note	For research use only
Isotype	IgG
Clonality	Polyclonal
MW	21/37/58 kDa
Uniprot ID	P60508
Dilution Range	WB=1:500-2000
Expiration Date	12 months from date of receipt.



Western blot analysis of extracts from K...