
Product Datasheet

HECTD1 antibody (orb157476)

Description

HECTD1 antibody

Species/Host

Rabbit

Reactivity

Bovine, Canine, Equine, Gallus, Human, Mouse, Porcine, Rat, Sheep

Conjugation

Unconjugated

Tested Applications

ELISA, ICC, IF, IHC-P

Immunogen

KLH conjugated synthetic peptide derived from human HECTD1. Please contact us for the exact immunogen sequence. The peptide is available as orb374815.

Target

HECTD1

Form/Appearance

10 mM PBS, 0.02% sodium azide

Concentration

-100 µg (in 200 µl): 0.5 mg/ml-200 µg (in 400 µl): 0.5 mg/ml

Storage

Store at 4°C for up to two weeks. For long term storage, aliquot and store at -20°C, avoid freeze/thaw cycles.

Note

For research use only

Isotype

IgG

Clonality

Polyclonal

Purity

Polyclonal antibodies are purified by peptide affinity chromatography

MW

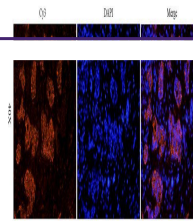
289 kDa

Uniprot ID
[Q69ZR2](#), [Q9ULT8](#)
Entrez
[25831](#)
Dilution Range

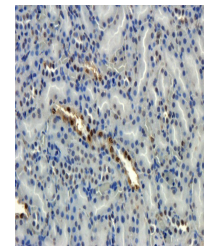
IF/ICC: 1:200, IHC-P:1:200

Expiration Date

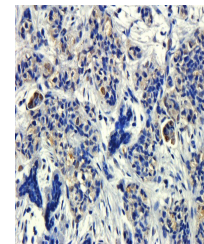
12 months from date of receipt.



Immunofluorescence image of human breast...



IHC-P image of rat kidney tissue using H...



IHC-P staining of human breast cancer ti...