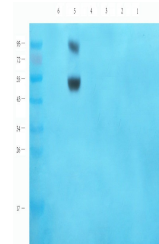


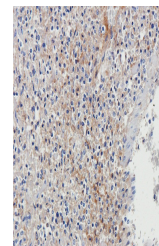
Product Datasheet

LGR7 antibody (orb157275)

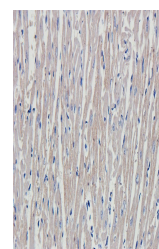
Description	LGR7 antibody
Species/Host	Rabbit
Reactivity	Guinea pig, Human, Mouse, Porcine, Rat
Conjugation	Unconjugated
Tested Applications	ICC, IF, IHC-P, WB
Immunogen	KLH conjugated synthetic peptide derived from human LGR7. Please contact us for the exact immunogen sequence. The peptide is available as orb12941.
Target	LGR7
Form/Appearance	10 mM PBS, 0.02% sodium azide
Concentration	-100 µg (in 200 µl): 0.5 mg/ml-200 µg (in 400 µl): 0.5 mg/ml
Storage	Store at 4°C for up to two weeks. For long term storage, aliquot and store at -20°C, avoid freeze/thaw cycles.
Note	For research use only
Isotype	IgG
Clonality	Polyclonal
Purity	Polyclonal antibodies are purified by peptide affinity chromatography
MW	57 kDa
Uniprot ID	Q6R6I6 , Q6R6I7 , Q9HBX9
NCBI	001253728 , 001240657
Entrez	59350
Dilution Range	IF/ICC: 1:50-500, IHC-P: 1:50-500, WB: 1:200-2000
Expiration Date	12 months from date of receipt.



Western blot analysis of rat ovary (lane...)



humant thyroid cancer (lane 5), 293T cel...



IHC-P image of pig spleen tissue using a...