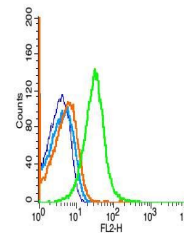


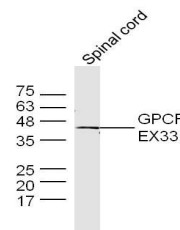
Product Datasheet

GPCR EX33 antibody (orb157273)

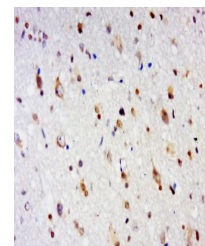
Description	GPCR EX33 antibody
Species/Host	Rabbit
Reactivity	Human, Mouse, Rabbit
Conjugation	Unconjugated
Tested Applications	FC, IHC-P
Immunogen	KLH conjugated synthetic peptide derived from human GPCR EX33 protein (21-120/369 aa)
Target	GPR84
Preservatives	0.01M TBS(pH7.4) with 1% rAlbumin, 0.03% Proclin300 and 50% Glycerol.
Form/Appearance	Liquid
Concentration	1mg/ml
Storage	Shipped at 4°C. Store at -20 °C for one year. Avoid repeated freeze/thaw cycles.
Note	For research use only
Isotype	IgG
Clonality	Polyclonal
MW	44 kDa
Uniprot ID	Q9NQS5
Dilution Range	IHC-P=1:100-500, Flow-Cyt=1µg/Test, IHC-F=1:100-500, ICC=1:100-500, IF=1:100-500
Expiration Date	12 months from date of receipt.



Flow cytometric analysis of Mouse thymus...



Western blot analysis of Spinal cord (Mo...)



Immunohistochemical staining of human br...