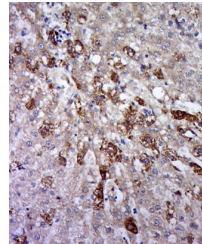


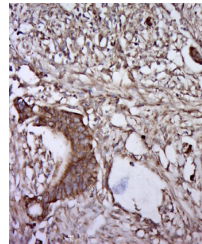
Product Datasheet

gp130 (Phospho-Ser782) antibody (orb157259)

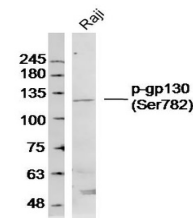
Description	gp130 (Phospho-Ser782) antibody
Species/Host	Rabbit
Reactivity	Human, Rat
Conjugation	Unconjugated
Tested Applications	WB
Immunogen	KLH conjugated synthesised phosphopeptide derived from human gp130 around the phosphorylation site of Ser782 (SE(p-S)TQ)
Target	phospho-CD130/gp130 (Ser782)
Preservatives	0.01M TBS(pH7.4) with 1% rAlbumin, 0.03% Proclin300 and 50% Glycerol.
Form/Appearance	Liquid
Concentration	1mg/ml
Storage	Maintain refrigerated at 2-8°C for up to 2 weeks. For long term storage store at -20°C in small aliquots to prevent freeze-thaw cycles.
Note	For research use only
Isotype	IgG
Clonality	Polyclonal
Uniprot ID	P40189
Dilution Range	WB=1:500-2000
Expiration Date	12 months from date of receipt.



IHC-P analysis of Rat liver using phosph...



IHC-P analysis of Human cervical cancer ...



Western blot:Raji (human)cell;Primary:An...