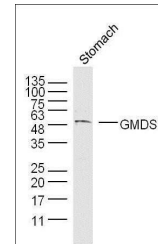


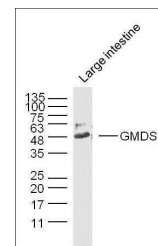
Product Datasheet

GMDS antibody (orb157208)

Description	GMDS antibody
Species/Host	Rabbit
Conjugation	Unconjugated
Tested Applications	ELISA, ICC, IF, IHC-Fr, IHC-P, WB
Immunogen	KLH conjugated synthetic peptide derived from human GMDS (201-300/372 aa)
Target	GMDS
Preservatives	0.01M TBS(pH7.4) with 1% rAlbumin, 0.03% Proclin300 and 50% Glycerol.
Form/Appearance	Liquid
Concentration	1mg/ml
Storage	Shipped at 4°C. Store at -20 °C for one year. Avoid repeated freeze/thaw cycles.
Note	For research use only
Isotype	IgG
Clonality	Polyclonal
MW	42 kDa
Uniprot ID	O60547
Expiration Date	12 months from date of receipt.



Western blot analysis of mouse Stomach I...



Western blot analysis of mouse Large intestine...