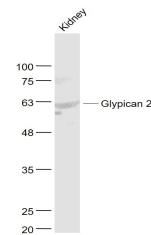


Product Datasheet

Glypican 2 antibody (orb157203)

Description	Glypican 2 antibody
Species/Host	Rabbit
Reactivity	Mouse
Conjugation	Unconjugated
Tested Applications	WB
Immunogen	KLH conjugated synthetic peptide derived from human Glypican 2/GPC2 (24-100/579 aa)
Target	Glypican 2
Preservatives	0.01M TBS(pH7.4) with 1% rAlbumin, 0.03% Proclin300 and 50% Glycerol.
Form/Appearance	Liquid
Concentration	1mg/ml
Storage	Shipped at 4°C. Store at -20 °C for one year. Avoid repeated freeze/thaw cycles.
Note	For research use only
Isotype	IgG
Clonality	Polyclonal
MW	58/61 kDa
Uniprot ID	Q8N158
Dilution Range	WB=1:500-2000
Expiration Date	12 months from date of receipt.



Sample:
Kidney
(Mouse)
Lysate at 40
ug P...