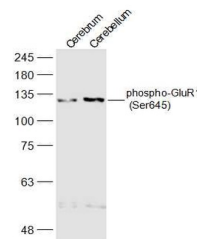


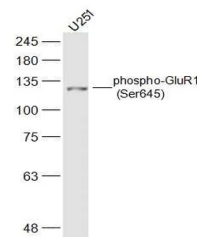
Product Datasheet

GluR1 (Phospho-Ser645) antibody (orb157183)

Description	GluR1 (Phospho-Ser645) antibody
Species/Host	Rabbit
Reactivity	Human, Mouse
Conjugation	Unconjugated
Tested Applications	IHC-P, WB
Immunogen	KLH conjugated synthesised phosphopeptide derived from human GluR1 around the phosphorylation site of Ser645 (MV(p-S)PI)
Target	phospho-GluR1 (Ser645)
Preservatives	0.01M TBS(pH7.4) with 1% rAlbumin, 0.03% Proclin300 and 50% Glycerol.
Form/Appearance	Liquid
Concentration	1mg/ml
Storage	Maintain refrigerated at 2-8°C for up to 2 weeks. For long term storage store at -20°C in small aliquots to prevent freeze-thaw cycles.
Note	For research use only
Isotype	IgG
Clonality	Polyclonal
MW	98 kDa
Uniprot ID	P42261
Dilution Range	WB=1:500-2000, IHC-P=1:100-500
Expiration Date	12 months from date of receipt.



Western blot:Cerebrum (Mouse);Cerebellum...



Western blot:U251(Human);Primary:Anti-ph...