

---

## Product Datasheet

### Glucocorticoid Receptor (Phospho-Ser226) antibody (orb157176)

**Description**

Glucocorticoid Receptor (Phospho-Ser226)


**Species/Host**

Rabbit

**Reactivity**

Human, Mouse, Rat

**Conjugation**

Unconjugated

**Tested Applications**

IF, IHC-Fr, IHC-P

Immunohistochemical staining of rat kidn...

**Immunogen**

KLH conjugated Synthesised phosphopeptide derived from human Glucocorticoid Receptor around the phosphorylation site of Ser226 (LL(p-S)PL)

**Target**

Phospho-Glucocorticoid Receptor (Ser226)

**Preservatives**

0.01M TBS(pH7.4) with 1% rAlbumin, 0.03% Proclin300 and 50% Glycerol.

**Form/Appearance**

Liquid

**Concentration**

1mg/ml

**Storage**

Shipped at 4°C. Store at -20 °C for one year. Avoid repeated freeze/thaw cycles.

**Note**

For research use only

**Isotype**

IgG

**Clonality**

Polyclonal

**MW**

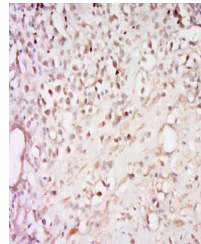
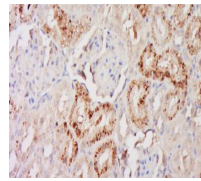
85 kDa

**Uniprot ID**
[P04150](https://www.uniprot.org/uniprot/P04150)
**Dilution Range**

IHC-P=1:100-500, IHC-F=1:100-500, IF=1:100-500, WB=1:500-2000, ICC=1:100-500, ELISA=1:5000-10000

**Expiration Date**

12 months from date of receipt.



Immunohistochemical staining of human ce...