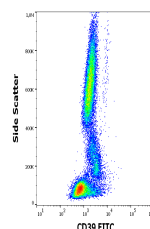


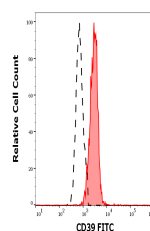
Product Datasheet

CD39 Antibody (FITC) (orb1570910)

Description	CD39, also known as ectonucleoside triphosphate diphosphohydrolase 1 (ENTPD1), is a cell surface enz...
Reactivity	Human
Conjugation	FITC
Tested Applications	FC
Target	CD39
Preservatives	Stabilizing phosphate buffered saline (PBS), pH 7.4, 15 mM sodium azide
Storage	Store at 2-8°C. Protect from prolonged exposure to light. Do not freeze.
Note	For research use only
Application notes	Flow cytometry: The reagent is designed for analysis of human blood cells using 4 µl reagent / 100 µl of whole blood or 10 ⁶ cells in a suspension. The content of a vial (0.4 ml) is sufficient for 100 tests.
Isotype	Mouse IgG2b kappa
Clonality	Monoclonal
Uniprot ID	P49961
Entrez	953
Expiration Date	12 months from date of receipt.



Flow cytometry surface staining pattern ...



Separation of human monocytes (red-fille...