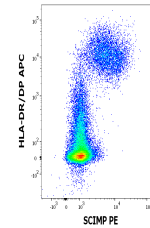


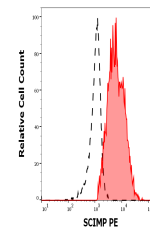
Product Datasheet

SCIMP Antibody (PE) (orb1570903)

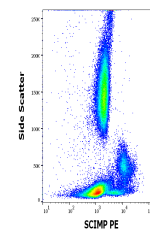
Description	SCIMP (SLP adaptor and Csk interacting membrane protein), also known as Nvl, is a palmitoylated tran...
Reactivity	Human
Conjugation	PE
Tested Applications	FC
Immunogen	Recombinant intracellular part of human SCIMP
Target	SCIMP
Preservatives	Stabilizing phosphate buffered saline (PBS), pH 7.4, 15 mM sodium azide
Storage	Store at 2-8°C. Protect from prolonged exposure to light. Do not freeze.
Note	For research use only
Application notes	Flow cytometry: The reagent is designed for analysis of human blood cells using 10 µl reagent / 100 µl of whole blood or 106 cells in a suspension. The content of a vial (1 ml) is sufficient for 100 tests. Intracellular staining.
Isotype	Mouse IgG2a
Clonality	Monoclonal
Uniprot ID	Q6UWF3
Entrez	388325
Expiration Date	12 months from date of receipt.



Flow cytometry multicolor staining patte...



Separation of human HLA-DR/DP positive S...



Flow cytometry intracellular staining pa...