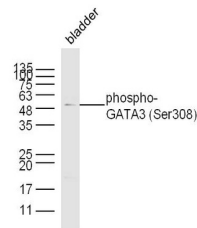


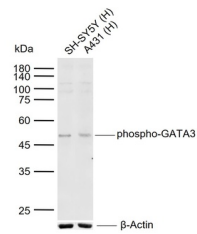
## Product Datasheet

### GATA3 (Phospho-Ser308) antibody (orb157053)

|                            |   |
|----------------------------|---|
| <b>Description</b>         | GATA3 (Phospho-Ser308) antibody   |
| <b>Species/Host</b>        | Rabbit  |
| <b>Reactivity</b>          | Human, Mouse  |
| <b>Conjugation</b>         | Unconjugated  |
| <b>Tested Applications</b> | WB  |
| <b>Immunogen</b>           | KLH conjugated synthesised phosphopeptide derived from human GATA3 around the phosphorylation site of Ser308 (RL(pS)AA)                 |
| <b>Target</b>              | phospho-GATA3 (Ser308)  |
| <b>Preservatives</b>       | 0.01M TBS(pH7.4) with 1% rAlbumin, 0.03% Proclin300 and 50% Glycerol.   |
| <b>Form/Appearance</b>     | Liquid  |
| <b>Concentration</b>       | 1mg/ml  |
| <b>Storage</b>             | Maintain refrigerated at 2-8°C for up to 2 weeks. For long term storage store at -20°C in small aliquots to prevent freeze-thaw cycles. |
| <b>Note</b>                | For research use only   |
| <b>Isotype</b>             | IgG   |
| <b>Clonality</b>           | Polyclonal  |
| <b>MW</b>                  | 49 kDa  |
| <b>Uniprot ID</b>          | <a href="#">P23771</a>  |
| <b>Dilution Range</b>      | WB=1:500-2000   |
| <b>Expiration Date</b>     | 12 months from date of receipt.   |



Western blot:Protein:bladder(mouse);Prim...



Western blot:Lane 1:Human SH-SY5Y cell;L...