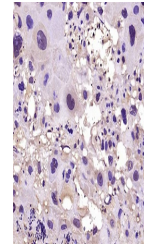


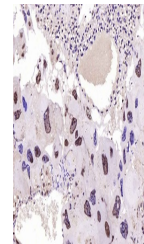
Product Datasheet

FoxO1 (Phospho-Ser329) antibody (orb156937)

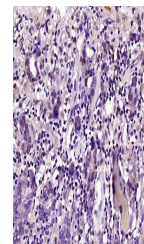
Description	FoxO1 (Phospho-Ser329) antibody
Species/Host	Rabbit
Reactivity	Human, Mouse, Rat
Conjugation	Unconjugated
Tested Applications	IHC-P
Immunogen	KLH conjugated synthesised phosphopeptide derived from human FoxO1 around the phosphorylation site of Ser329 (RL(P-S)PI)
Target	Phospho-FoxO1 (Ser329)
Preservatives	0.01M TBS(pH7.4) with 1% rAlbumin, 0.03% Proclin300 and 50% Glycerol.
Form/Appearance	Liquid
Concentration	1mg/ml
Storage	Maintain refrigerated at 2-8°C for up to 2 weeks. For long term storage store at -20°C in small aliquots to prevent freeze-thaw cycles.
Note	For research use only
Isotype	IgG
Clonality	Polyclonal
MW	72 kDa
Uniprot ID	Q12778
Dilution Range	IHC-P=1:100-500
Expiration Date	12 months from date of receipt.



IHC-P analysis of rat placenta using Phospho-FoxO1 (Ser329) antibody.



IHC-P analysis of mouse placenta using Phospho-FoxO1 (Ser329) antibody.



IHC-P analysis of human gastric carcinoma using Phospho-FoxO1 (Ser329) antibody.