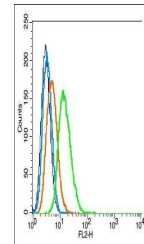


Product Datasheet

Fos B (Phospho-Ser27) antibody (orb156921)

| | |
|----------------------------|--|
| Description | Fos B (Phospho-Ser27) antibody |
| Species/Host | Rabbit |
| Reactivity | Human |
| Conjugation | Unconjugated |
| Tested Applications | FC, WB |
| Immunogen | KLH conjugated synthesised phosphopeptide derived from human Fos B around the phosphorylation site of Ser27 (QYL(p-S)SV) |
| Target | phospho-Fos B (Ser27) |
| Preservatives | 0.01M TBS(pH7.4) with 1% rAlbumin, 0.03% Proclin300 and 50% Glycerol. |
| Form/Appearance | Liquid |
| Concentration | 1mg/ml |
| Storage | Shipped at 4°C. Store at -20 °C for one year. Avoid repeated freeze/thaw cycles. |
| Note | For research use only |
| Isotype | IgG |
| Clonality | Polyclonal |
| MW | 36 kDa |
| Uniprot ID | P53539 |
| Dilution Range | WB=1:500-2000, Flow-Cyt=1µg/Test |
| Expiration Date | 12 months from date of receipt. |



Flow cytometric analysis of Hela cell us...