
Product Datasheet

FOLR2 antibody (orb156919)

Description

FOLR2 antibody

Species/Host

Rabbit

Reactivity

Human, Mouse, Rat

Conjugation

Unconjugated

Tested

ELISA, IHC-P, WB

Applications
Immunogen

KLH conjugated synthetic peptide derived from human FOLR2. Please contact us for the exact immunogen sequence. The peptide is available as orb374814.

Target

FOLR2

Form/Appearance

10 mM PBS, 0.02% sodium azide

Concentration

- 100 µg (in 200 µl): 0.5 mg/ml- 200 µg (in 400 µl): 0.5 mg/ml

Storage

Store at 4°C for up to two weeks. For long term storage, aliquot and store at -20°C, avoid freeze/thaw cycles.

Note

For research use only

Isotype

IgG

Clonality

Polyclonal

Purity

Polyclonal antibodies are purified by peptide affinity chromatography

MW

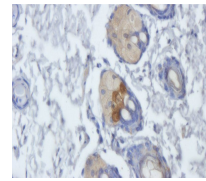
29 kDa

Uniprot ID
[P14207](#)
Entrez
[2350](#)
Dilution Range

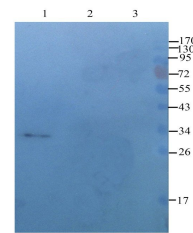
WB: 1:100-800, IHC-P: 1:100-600 (based on 0.5 mg/ml)

Expiration Date

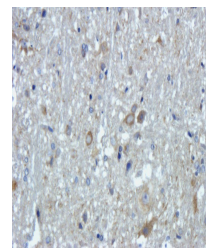
12 months from date of receipt.



IHC-P image of rat skin tissue using FOL...



Western blot analysis of rat heart (lane...



Immunohistochemical staining of rat spin...