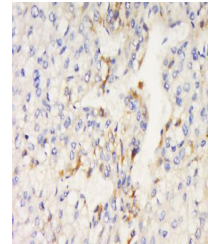


Product Datasheet

FNBP1L antibody (orb156911)

Description	FNBP1L antibody
Species/Host	Rabbit
Reactivity	Human
Conjugation	Unconjugated
Tested Applications	ELISA, ICC, IF, IHC-Fr, IHC-P
Immunogen	KLH conjugated synthetic peptide derived from human FNBP1L/TOCA1 (101-200/605 aa)
Target	FNBP1L
Preservatives	0.01M TBS(pH7.4) with 1% rAlbumin, 0.03% Proclin300 and 50% Glycerol.
Form/Appearance	Liquid
Concentration	1mg/ml
Storage	Shipped at 4°C. Store at -20 °C for one year. Avoid repeated freeze/thaw cycles.
Note	For research use only
Isotype	IgG
Clonality	Polyclonal
MW	70 kDa
Uniprot ID	Q5TON5
Expiration Date	12 months from date of receipt.



Immunohistochemical staining of Human Li...