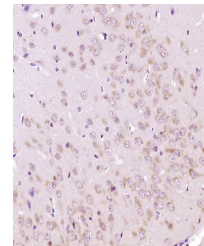


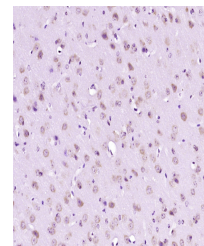
Product Datasheet

FBXO45 antibody (orb156851)

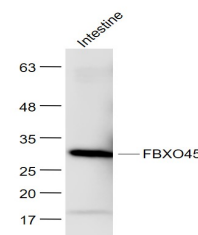
Description	FBXO45 antibody
Species/Host	Rabbit
Reactivity	Human, Mouse, Rat
Conjugation	Unconjugated
Tested Applications	IHC-P, WB
Immunogen	KLH conjugated synthetic peptide derived from human FBXO45 (110-210/286 aa)
Target	FBXO45
Preservatives	0.01M TBS(pH7.4) with 1% rAlbumin, 0.03% Proclin300 and 50% Glycerol.
Form/Appearance	Liquid
Concentration	1mg/ml
Storage	Shipped at 4°C. Store at -20 °C for one year. Avoid repeated freeze/thaw cycles.
Note	For research use only
Isotype	IgG
Clonality	Polyclonal
MW	31 kDa
Uniprot ID	POC2W1
Dilution Range	WB=1:500-2000
Expiration Date	12 months from date of receipt.



Paraformaldehyde-fixed, paraffin embedde...



Paraformaldehyde-fixed, paraffin embedde...



Sample:
Intestine(Mouse)
Lysate at 40 ug...