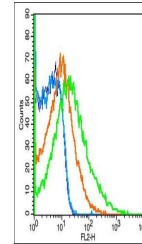


Product Datasheet

eNOS (Phospho-Ser1176) antibody (orb156733)

Description	eNOS (Phospho-Ser1176) antibody
Species/Host	Rabbit
Reactivity	Mouse
Conjugation	Unconjugated
Tested Applications	WB
Immunogen	KLH conjugated Synthesised phosphopeptide derived from mouse eNOS around the phosphorylation site of Ser1176 (TQ(p-S)FS)
Target	Phospho-eNOS (Ser1176)
Preservatives	0.01M TBS(pH7.4) with 1% rAlbumin, 0.03% Proclin300 and 50% Glycerol.
Form/Appearance	Liquid
Concentration	1mg/ml
Storage	Shipped at 4°C. Store at -20 °C for one year. Avoid repeated freeze/thaw cycles.
Note	For research use only
Isotype	IgG
Clonality	Polyclonal
MW	133 kDa
Uniprot ID	P29474
Dilution Range	WB=1:500-2000
Expiration Date	12 months from date of receipt.



Flow cytometric analysis of (mo) Splenoc...