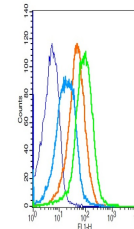


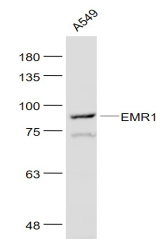
Product Datasheet

EMR1 antibody (orb156726)

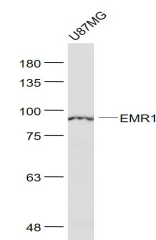
Description	EMR1 antibody
Species/Host	Rabbit
Reactivity	Human, Mouse
Conjugation	Unconjugated
Tested Applications	FC, WB
Immunogen	KLH conjugated synthetic peptide derived from human ADGRE1 (701-800/886 aa)
Target	ADGRE1
Preservatives	0.01M TBS(pH7.4) with 1% rAlbumin, 0.03% Proclin300 and 50% Glycerol.
Form/Appearance	Liquid
Concentration	1mg/ml
Storage	Shipped at 4°C. Store at -20 °C for one year. Avoid repeated freeze/thaw cycles.
Note	For research use only
Isotype	IgG
Clonality	Polyclonal
MW	95 kDa
Uniprot ID	Q14246
Dilution Range	WB=1:500-2000, Flow-Cyt=2µg/Test
Expiration Date	12 months from date of receipt.



Mouse splenocytes probed with Rabbit Ant...



A549 cell lysates probed with EMR1 Polyc...



U87MG cell lysates probed with EMR1 Poly...