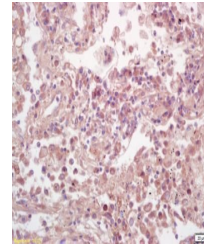


Product Datasheet

ELk1(Phospho-Ser383) antibody (orb156719)

Description	ELk1(Phospho-Ser383) antibody
Species/Host	Rabbit
Reactivity	Human, Mouse
Conjugation	Unconjugated
Tested Applications	WB
Immunogen	KLH conjugated synthesised phosphopeptide derived from human ELk1 around the phosphorylation site of Ser383 (TL(p-S)PI)
Target	Phospho-ELk1 (Ser383)
Preservatives	0.01M TBS(pH7.4) with 1% rAlbumin, 0.03% Proclin300 and 50% Glycerol.
Form/Appearance	Liquid
Concentration	1mg/ml
Storage	Shipped at 4°C. Store at -20 °C for one year. Avoid repeated freeze/thaw cycles.
Note	For research use only
Isotype	IgG
Clonality	Polyclonal
MW	47 kDa
Uniprot ID	P19419
Dilution Range	WB=1:500-2000
Expiration Date	12 months from date of receipt.



Immunohistochemical analysis of formalin...