
Product Datasheet

Protein Molecular Weight Marker (orb1567188)

Description

Protein Molecular Weight Marker

Conjugation

Unconjugated

Tested

SDS-PAGE

Applications
Preservatives

Preservative: 0.01% (w/v) Sodium Azide. Stabilizer: None. 2.5 mM Tris-HCl, pH 6.8, 2% (w/v) SDS, 250 mM NaCl, 1mM EDTA, 4% (v/v) β-Mercaptoethanol, 35% (v/v) Glycerol and 0.05% (w/v) bromophenol blue

Form/Appearance

Liquid (in 1x Loading Buffer)

Concentration

1X

Storage

Store vial at -20° C.

Note

For research use only

Application notes

Protein Molecular Weight Marker has been tested and is designed for use in accurate estimation of protein molecular weight in SDS-polyacrylamide gel electrophoresis and western blotting. Thaw the cocktail at room temperature. Gently invert vial several times to ensure that the solution is homogeneous and that any precipitated material is re-dissolved. A loading volume of 5-10µl is appropriate for most gel formats

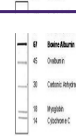
Purity

Protein Molecular Weight Marker is supplied in 1X loading buffer and is ready-to-use. It contains: [62.5 mM Tris-HCl, pH 6.8, 2% (w/v) SDS, 250 mM NaCl, 1mM EDTA, 4% (v/v) β-Mercaptoethanol, 35% (v/v) Glycerol and 0.05% (w/v) bromophenol blue.] This product are unstained markers optimized for use with Coomassie blue staining, but the loading volume can be adjusted for compatibility with other staining methods (i.e. silver staining). The intensity of the 67 kDa bovine albumin band has been increased to serve as a reference.

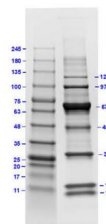
Expiration Date

6 months from date of receipt.

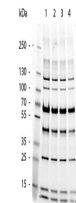
kDa Protein


 4.20% Tris-Glycine SDS-PAGE
Stained with Coomassie Blue

SDS PAGE of Protein Molecular Weight Mar...



SDS PAGE Results of Protein Molecular We...



SDS-Page of Protein Molecular Weight Mar...