

Product Datasheet

Rabbit anti-CEACAM1 Recombinant Monoclonal Antibody (orb1566957)

| | |
|----------------------------|-------------------------------------------------------------------------------|
| Description | CEACAM1 Antibody |
| Species/Host | Rabbit |
| Reactivity | Mouse |
| Conjugation | Unconjugated |
| Tested Applications | FC, ICC, IHC, IP, WB |
| Immunogen | Residues 35-141 (ECD) |
| Target | CEACAM1 |
| Preservatives | Borate Buffered Saline (BBS) pH 8.2 with 0.1% rAlbumin and 0.09% Sodium Azide |
| Form/Appearance | Whole IgG |
| Concentration | 50 µg/ml |
| Storage | 2 - 8°C |
| Note | For research use only |
| Application notes | Format: Whole IgG |
| Clonality | Recombinant |
| Clone Number | BLR240L |
| Antibody Type | Primary Antibody |
| Uniprot ID | P31809 |

Biorbyt Ltd.

7 Signet Court, Swann's Road,
Cambridge, CB5 8LA, United Kingdom
Email: info@biorbyt.com, support@biorbyt.com
Phone: [+44 \(0\) 1223 859-353](tel:+44(0)1223859353) | Fax: [+1 \(415\) 651-8558](tel:+1(415)6518558)

Biorbyt LLC.

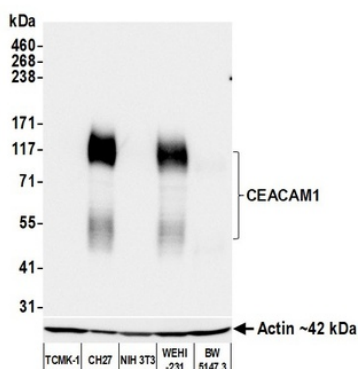
68 TW Alexander Drive,
Durham, NC, 27713, United States
Email: info@biorbyt.com, support@biorbyt.com
Phone: [+1 \(415\) 906-5211](tel:+1(415)9065211) | Fax: [+1 \(415\) 651-8558](tel:+1(415)6518558)

NCBI**NP_001034274.1****Dilution Range**

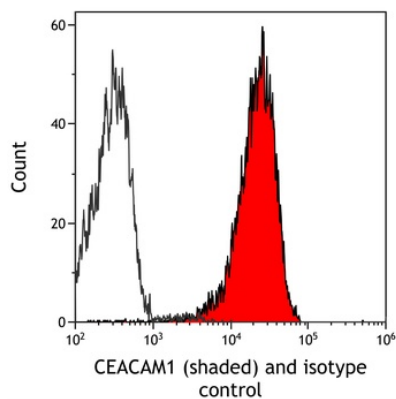
WB - 1:1,000; IP - 20 µl/1 mg lysate; IHC - 1:100 to 1:500. Epitope retrieval with citrate buffer pH 6.0 is recommended for FFPE tissue sections.; ICC - 1:100 to 1:500. Epitope retrieval with citrate buffer pH 6.0 is recommended for FFPE cell sections.

Expiration Date

12 months from date of receipt.



Detection of mouse CEACAM1 by western blot. Samples: Whole cell lysate (25 µg) from TCMK-1, CH27 (10 µg), NIH 3T3, WEHI-231, and BW5147.3 cells prepared using NETN lysis buffer. Antibody: Rabbit anti-CEACAM1 recombinant monoclonal antibody (orb1566957) used at 1:1000. Secondary: HRP-conjugated goat anti-rabbit IgG. Detection: Chemiluminescence with an exposure time of 3 seconds. Lower Panel: Rabbit anti-Actin recombinant monoclonal antibody.



Detection of mouse CEACAM1 (shaded) in CH27 cells by flow cytometry. Antibody: Rabbit anti-CEACAM1 recombinant monoclonal antibody (orb1566957) or isotype control (unshaded). Secondary: DyLight® 650-conjugated goat anti-rabbit IgG.

Biorbyt Ltd.

7 Signet Court, Swann's Road,
Cambridge, CB5 8LA, United Kingdom
Email: info@biorbyt.com, support@biorbyt.com
Phone: [+44 \(0\) 1223 859-353](tel:+44(0)1223859353) | Fax: [+1 \(415\) 651-8558](tel:+1(415)6518558)

Biorbyt LLC.

68 TW Alexander Drive,
Durham, NC, 27713, United States
Email: info@biorbyt.com, support@biorbyt.com
Phone: [+1 \(415\) 906-5211](tel:+1(415)9065211) | Fax: [+1 \(415\) 651-8558](tel:+1(415)6518558)