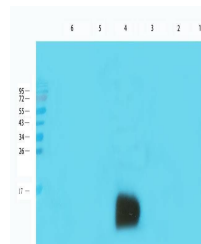


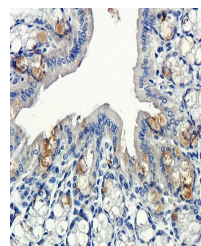
## Product Datasheet

### ECP antibody (orb156688)

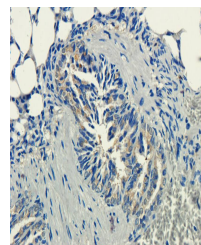
<b>Description</b>	ECP antibody
<b>Species/Host</b>	Rabbit
<b>Reactivity</b>	Guinea pig, Human, Mouse, Porcine, Rat
<b>Conjugation</b>	Unconjugated
<b>Tested Applications</b>	ICC, IF, IHC-P, WB
<b>Immunogen</b>	KLH conjugated synthetic peptide derived from human ECP. Please contact us for the exact immunogen sequence. The peptide is available as orb12940.
<b>Target</b>	ECP
<b>Form/Appearance</b>	10 mM PBS, 0.02% sodium azide
<b>Concentration</b>	-100 µg (in 200 µl): 0.5 mg/ml-200 µg (in 400 µl): 0.5 mg/ml
<b>Storage</b>	Maintain refrigerated at 2-8°C for up to 2 weeks. For long term storage store at -20°C in small aliquots to prevent freeze-thaw cycles.
<b>Note</b>	For research use only
<b>Isotype</b>	IgG
<b>Clonality</b>	Polyclonal
<b>Purity</b>	Polyclonal antibodies are purified by peptide affinity chromatography
<b>MW</b>	18 kDa
<b>Uniprot ID</b>	<a href="#">P12724</a>
<b>Entrez</b>	<a href="#">6037</a>
<b>Dilution Range</b>	IF/ICC: 1:50-400, IHC-P: 1:50-300, WB: 1:200-2000
<b>Expiration Date</b>	12 months from date of receipt.



Western blot analysis of rat lymph node ...



Immunohistochemical staining of paraffin...



Immunohistochemical staining of guinea p...