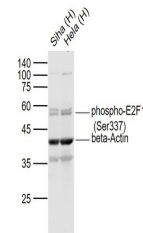


Product Datasheet

E2F1 (Phospho-Ser337) antibody (orb156678)

| | |
|----------------------------|---|
| Description | E2F1 (Phospho-Ser337) antibody |
| Species/Host | Rabbit |
| Reactivity | Human |
| Conjugation | Unconjugated |
| Tested Applications | WB |
| Immunogen | KLH conjugated Synthesised phosphopeptide derived from human E2F1 around the phosphorylation site of Ser337 (L(p-S)PL) |
| Target | phospho-E2F1 (Ser337) |
| Preservatives | 0.01M TBS(pH7.4) with 1% rAlbumin, 0.03% Proclin300 and 50% Glycerol. |
| Form/Appearance | Liquid |
| Concentration | 1mg/ml |
| Storage | Maintain refrigerated at 2-8°C for up to 2 weeks. For long term storage store at -20°C in small aliquots to prevent freeze-thaw cycles. |
| Note | For research use only |
| Isotype | IgG |
| Clonality | Polyclonal |
| MW | 46 kDa |
| Uniprot ID | Q01094 |
| Dilution Range | WB=1:500-2000 |
| Expiration Date | 12 months from date of receipt. |



Western blot: Lane 1: Siha (Human) Cell; La...