

## Product Datasheet

# E Cadherin (Phospho-Ser838 + Ser840) antibody (orb156676)

**Description** E Cadherin (Phospho-Ser838 + Ser840) antibody

**Species/Host** Rabbit

**Reactivity** Human

**Conjugation** Unconjugated

**Tested Applications** ELISA, IF, IHC-Fr, IHC-P

**Immunogen** KLH conjugated Synthesised phosphopeptide derived from human E Cadherin around the phosphorylation site of Ser838 + Ser840 (EG(P-S)G(p-S)EA)

**Target** Phospho-E Cadherin (Ser838 + Ser840)

**Preservatives** 0.01M TBS(pH7.4) with 1% rAlbumin, 0.03% Proclin300 and 50% Glycerol.

**Form/Appearance** Liquid

**Concentration** 1mg/ml

**Storage** Shipped at 4°C. Store at -20 °C for one year. Avoid repeated freeze/thaw cycles.

**Note** For research use only

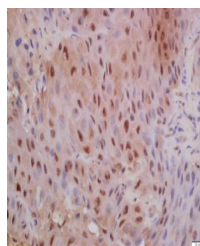
**Isotype** IgG

**Clonality** Polyclonal

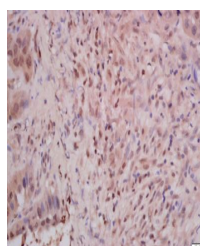
**MW** 90/97 kDa

**Uniprot ID** [P12830](#)

**Expiration Date** 12 months from date of receipt.



Immunohistochemical staining of human placenta



Immunohistochemical staining of human placenta