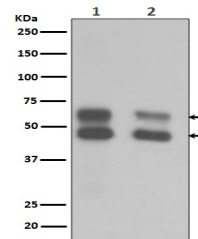


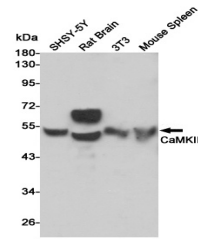
Product Datasheet

CAMK2B Antibody (orb1565622)

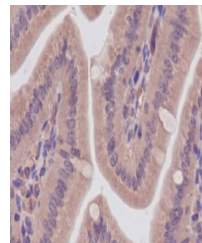
| | |
|----------------------------|---|
| Description | CAMK2B Antibody |
| Species/Host | Rabbit |
| Reactivity | Human, Mouse, Rat |
| Conjugation | Unconjugated |
| Tested Applications | ICC, IHC-P, WB |
| Immunogen | A synthesized peptide derived from human CaMKII |
| Target | CAMK2B |
| Preservatives | Rabbit IgG in phosphate buffered saline , pH 7.4, 150mM NaCl, 0.02% sodium azide and 50% glycerol. |
| Form/Appearance | Liquid |
| Storage | Maintain refrigerated at 2-8°C for up to 2 weeks. For long term storage store at -20°C in small aliquots to prevent freeze-thaw cycles. |
| Note | For research use only |
| Isotype | IgG |
| Clonality | Polyclonal |
| MW | Calculated MW: 73 kDa; Observed MW: 45,60 kDa |
| Uniprot ID | Q13554 |
| Dilution Range | WB: 1/500-1/1000 IHC: 1/50-1/100 IF: 1/50-1/200 |
| Expiration Date | 12 months from date of receipt. |



Western blot analysis of CaMKII in (1) m...



Western blot analysis of CaMKII in SH-SY...



Immunohistochemistry analysis of paraffi...