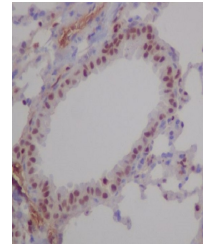


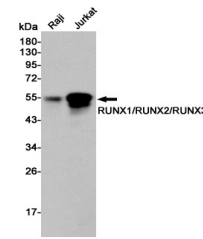
Product Datasheet

RUNX1/RUNX2/RUNX3 Antibody (orb1565621)

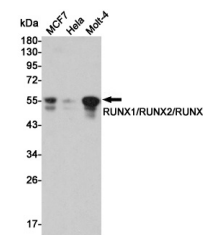
Description	RUNX1/RUNX2/RUNX3 Antibody
Species/Host	Rabbit
Reactivity	Human, Mouse, Rat
Conjugation	Unconjugated
Tested Applications	FC, ICC, IHC-P, IP, WB
Immunogen	A synthesized peptide derived from human RUNX1/RUNX2/RUNX3
Target	RUNX1/RUNX2/RUNX3
Preservatives	Rabbit IgG in phosphate buffered saline , pH 7.4, 150mM NaCl, 0.02% sodium azide and 50% glycerol.
Form/Appearance	Liquid
Storage	Maintain refrigerated at 2-8°C for up to 2 weeks. For long term storage store at -20°C in small aliquots to prevent freeze-thaw cycles.
Note	For research use only
Isotype	IgG
Clonality	Polyclonal
MW	Calculated MW: 49 kDa; Observed MW: 49 kDa
Uniprot ID	Q13950 , Q13761 , Q01196
Dilution Range	WB: 1/500-1/1000 IHC: 1/50-1/100 IF: 1/50-1/200 IP: 1/20 FC: 1/50-1/100
Expiration Date	12 months from date of receipt.



Immunohistochemistry analysis of paraffi...



Western blot analysis of RUNX1/RUNX2/RUN...



Western blot analysis of RUNX1/RUNX2/RUN...