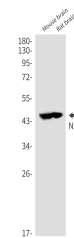


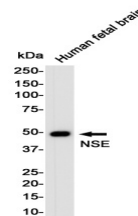
Product Datasheet

ENO2 Antibody (orb1565558)

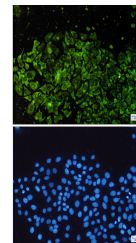
Description	ENO2 Antibody
Species/Host	Rabbit
Reactivity	Human, Mouse, Rat
Conjugation	Unconjugated
Tested Applications	FC, ICC, IHC-Fr, IHC-P, WB
Immunogen	A synthetic peptide of human NSE
Target	ENO2
Preservatives	50mM Tris-Glycine(pH 7.4), 0.15M NaCl, 40% Glycerol, 0.01% Sodium azide and 0.05% rAlbumin
Form/Appearance	Liquid
Storage	Maintain refrigerated at 2-8°C for up to 2 weeks. For long term storage store at -20°C in small aliquots to prevent freeze-thaw cycles.
Note	For research use only
Isotype	IgG
Clonality	Polyclonal
MW	Calculated MW: 47 kDa; Observed MW: 47 kDa
Uniprot ID	P09104
Dilution Range	WB: 1/500-1/1000 IHC: 1/50-1/100 IF: 1/50-1/200 FC: 1/50-1/100
Expiration Date	12 months from date of receipt.



Western blot analysis of NSE in mouse br...



Western blot analysis of Enolase2/NSE in...



Immunocytochemistry analysis of NSE (gre...