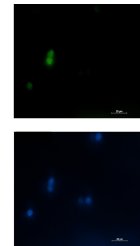


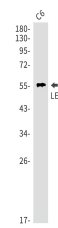
Product Datasheet

LEF1 Antibody (orb1565541)

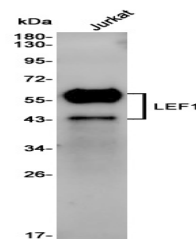
Description	LEF1 Antibody
Species/Host	Rabbit
Reactivity	Human, Rat
Conjugation	Unconjugated
Tested Applications	FC, ICC, IHC-Fr, IHC-P, IP, WB
Immunogen	A synthetic peptide of human LEF1
Target	LEF1
Preservatives	50mM Tris-Glycine(pH 7.4), 0.15M NaCl, 40% Glycerol, 0.01% Sodium azide and 0.05% rAlbumin
Form/Appearance	Liquid
Storage	Maintain refrigerated at 2-8°C for up to 2 weeks. For long term storage store at -20°C in small aliquots to prevent freeze-thaw cycles.
Note	For research use only
Isotype	IgG
Clonality	Polyclonal
MW	Calculated MW: 44 kDa; Observed MW: 25-58 kDa
Uniprot ID	Q9UJU2
Dilution Range	WB: 1/500-1/1000 IHC: 1/50-1/100 IF: 1/50-1/200 IP: 1/20 FC: 1/50-1/100
Expiration Date	12 months from date of receipt.



Immunocytochemistry analysis of LEF1 (gr...



Western blot analysis of LEF1 in C6 lysa...



Western blot analysis of LEF1 in Jurkat ...