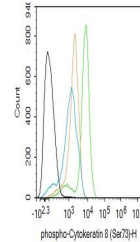


Product Datasheet

Cytokeratin 8 (Phospho-Ser73) antibody (orb156524)

Description	Cytokeratin 8 (Phospho-Ser73) antibody
Species/Host	Rabbit
Reactivity	Human
Conjugation	Unconjugated
Tested Applications	FC
Immunogen	KLH conjugated synthesised phosphopeptide derived from human CK8 around the phosphorylation site of Ser73 (LL(p-S)PL)
Target	phospho-Cytokeratin 8 (Ser73)
Preservatives	0.01M TBS(pH7.4) with 1% rAlbumin, 0.03% Proclin300 and 50% Glycerol.
Form/Appearance	Liquid
Concentration	1mg/ml
Storage	Maintain refrigerated at 2-8°C for up to 2 weeks. For long term storage store at -20°C in small aliquots to prevent freeze-thaw cycles.
Note	For research use only
Isotype	IgG
Clonality	Polyclonal
MW	53 kDa
Uniprot ID	P05787
Dilution Range	Flow-Cyt=2ug/Test, WB=1:500-2000, IHC-F=1:100-500, IF=1:100-500, ELISA=1:5000-10000
Expiration Date	12 months from date of receipt.



Flow cytometry of MCF-7. Primary Antibody...