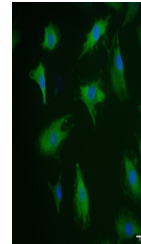


## Product Datasheet

### Cyclin D3 (Phospho-Thr283) antibody (orb156505)

|                            |   |
|----------------------------|---|
| <b>Description</b>         | Cyclin D3 (Phospho-Thr283) antibody   |
| <b>Species/Host</b>        | Rabbit  |
| <b>Reactivity</b>          | Human   |
| <b>Conjugation</b>         | Unconjugated  |
| <b>Tested Applications</b> | FC, ICC   |
| <b>Immunogen</b>           | KLH conjugated synthesised phosphopeptide derived from human Cyclin D3 around the phosphorylation site of Thr283 (TS(p-T)PT)            |
| <b>Target</b>              | phospho-Cyclin D3 (Thr283)  |
| <b>Preservatives</b>       | 0.01M TBS(pH7.4) with 1% rAlbumin, 0.03% Proclin300 and 50% Glycerol.   |
| <b>Form/Appearance</b>     | Liquid  |
| <b>Concentration</b>       | 1mg/ml  |
| <b>Storage</b>             | Maintain refrigerated at 2-8°C for up to 2 weeks. For long term storage store at -20°C in small aliquots to prevent freeze-thaw cycles. |
| <b>Note</b>                | For research use only   |
| <b>Isotype</b>             | IgG   |
| <b>Clonality</b>           | Polyclonal  |
| <b>MW</b>                  | 33 kDa  |
| <b>Uniprot ID</b>          | <b>P30281</b>   |
| <b>Dilution Range</b>      | ICC=1:100, Flow-Cyt=1ug/Test  |
| <b>Expiration Date</b>     | 12 months from date of receipt.   |



ICC analysis of A549 cell using phospho-...