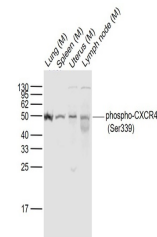


Product Datasheet

CXCR4 (Phospho-Ser339) antibody (orb156502)

Description	CXCR4 (Phospho-Ser339) antibody
Species/Host	Rabbit
Reactivity	Mouse
Conjugation	Unconjugated
Tested Applications	FC, WB
Immunogen	KLH conjugated Synthesised phosphopeptide derived from human CXCR4 around the phosphorylation site of Ser339 (HS(p-S)VS)
Target	phospho-CXCR4 (Ser339)
Preservatives	0.01M TBS(pH7.4) with 1% rAlbumin, 0.03% Proclin300 and 50% Glycerol.
Form/Appearance	Liquid
Concentration	1mg/ml
Storage	Maintain refrigerated at 2-8°C for up to 2 weeks. For long term storage store at -20°C in small aliquots to prevent freeze-thaw cycles.
Note	For research use only
Isotype	IgG
Clonality	Polyclonal
MW	40 kDa
Uniprot ID	P61073
Dilution Range	WB=1:500-2000, Flow-Cyt=1µg/Test
Expiration Date	12 months from date of receipt.



Western blot: Lane 1: Lung (Mouse); Lane 2:...