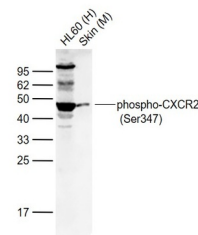


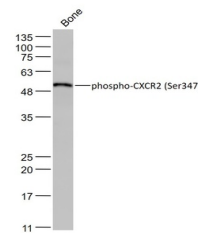
Product Datasheet

CXCR2 (Phospho-Ser347) antibody (orb156501)

Description	CXCR2 (Phospho-Ser347) antibody
Species/Host	Rabbit
Reactivity	Human, Mouse
Conjugation	Unconjugated
Tested Applications	WB
Immunogen	KLH conjugated Synthesised phosphopeptide derived from human CXCR2 around the phosphorylation site of Ser347 (RP(p-S)FV)
Target	phospho-CXCR2 (Ser347)
Preservatives	0.01M TBS(pH7.4) with 1% rAlbumin, 0.03% Proclin300 and 50% Glycerol.
Form/Appearance	Liquid
Concentration	1mg/ml
Storage	Shipped at 4°C. Store at -20°C for one year. Avoid repeated freeze/thaw cycles.
Note	For research use only
Isotype	IgG
Clonality	Polyclonal
MW	41 kDa
Uniprot ID	P25025
Dilution Range	WB=1:500-2000
Expiration Date	12 months from date of receipt.



Western blot: Lane 1: HL60 (Human) Cell; La...



Western blot: Bone (Mouse); Primary: Anti-p...