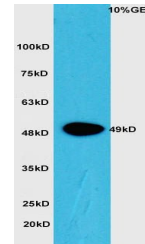


Product Datasheet

CTBP1 (Phospho-Ser422) antibody (orb156482)

Description	CTBP1 (Phospho-Ser422) antibody
Species/Host	Rabbit
Reactivity	Rat
Conjugation	Unconjugated
Tested Applications	IHC-P
Immunogen	KLH conjugated synthesised phosphopeptide derived from human CTBP1 around the phosphorylation site of Ser422 (AP(p-S)PG)
Target	phospho-CTBP1 (Ser422)
Preservatives	0.01M TBS(pH7.4) with 1% rAlbumin, 0.03% Proclin300 and 50% Glycerol.
Form/Appearance	Liquid
Concentration	1mg/ml
Storage	Shipped at 4°C. Store at -20 °C for one year. Avoid repeated freeze/thaw cycles.
Note	For research use only
Isotype	IgG
Clonality	Polyclonal
MW	49 kDa
Uniprot ID	Q13363
Dilution Range	IHC-P=1:100-500
Expiration Date	12 months from date of receipt.



Western blot analysis of mouse intestina...