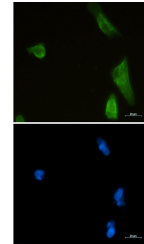


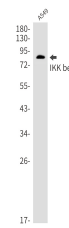
## Product Datasheet

### IKBKB Antibody (orb1564737)

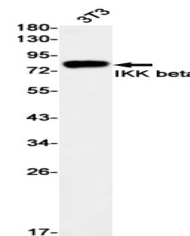
<b>Description</b>	IKBKB Antibody
<b>Species/Host</b>	Rabbit
<b>Reactivity</b>	Human, Mouse, Rat
<b>Conjugation</b>	Unconjugated
<b>Tested Applications</b>	ICC, WB
<b>Immunogen</b>	A synthetic peptide of human IKK beta
<b>Target</b>	IKBKB
<b>Preservatives</b>	50mM Tris-Glycine(pH 7.4), 0.15M NaCl, 40% Glycerol, 0.01% Sodium azide and 0.05% rAlbumin
<b>Form/Appearance</b>	Liquid
<b>Concentration</b>	0.3 mg/ml
<b>Storage</b>	Maintain refrigerated at 2-8°C for up to 2 weeks. For long term storage store at -20°C in small aliquots to prevent freeze-thaw cycles.
<b>Note</b>	For research use only
<b>Isotype</b>	IgG
<b>Clonality</b>	Monoclonal
<b>MW</b>	Calculated MW: 87 kDa; Observed MW: 87 kDa
<b>Uniprot ID</b>	<a href="#">O14920</a>
<b>Dilution Range</b>	WB: 1/500-1/1000 IF: 1/50-1/200
<b>Expiration Date</b>	12 months from date of receipt.



Immunocytochemistry analysis of IKK beta in A549 cells.



Western blot analysis of IKK beta in A549 cells.



Western blot analysis of IKK beta in 3T3 cells.