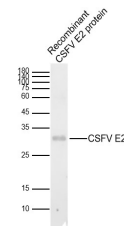


Product Datasheet

CSFV Envelope glycoprotein E2 antibody (orb156468)

Description	CSFV Envelope glycoprotein E2 antibody
Species/Host	Rabbit
Reactivity	Virus
Conjugation	Unconjugated
Tested Applications	WB
Immunogen	KLH conjugated synthetic peptide derived from CSFV Envelope glycoprotein E2 (951-1050/3898 aa)
Target	CSFV E2
Preservatives	0.01M TBS(pH7.4) with 1% rAlbumin, 0.03% Proclin300 and 50% Glycerol.
Form/Appearance	Liquid
Concentration	1mg/ml
Storage	Shipped at 4°C. Store at -20 °C for one year. Avoid repeated freeze/thaw cycles.
Note	For research use only
Isotype	IgG
Clonality	Polyclonal
MW	42 kDa
Uniprot ID	P19712
Dilution Range	WB=1:500-2000
Expiration Date	12 months from date of receipt.



Sample:
Lane 1:
Recombinant
CSFV E2
prot...