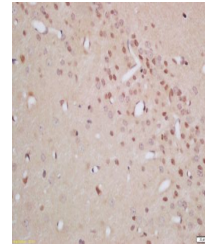


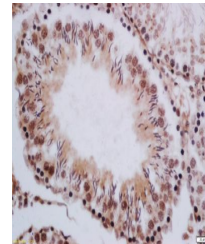
Product Datasheet

CRBN antibody (orb156449)

Description	CRBN antibody
Species/Host	Rabbit
Reactivity	Human, Mouse, Rat
Conjugation	Unconjugated
Tested Applications	IHC-P
Immunogen	KLH conjugated synthetic peptide derived from human CRBN (210-288/442 aa)
Target	CRBN
Preservatives	0.01M TBS(pH7.4) with 1% rAlbumin, 0.03% Proclin300 and 50% Glycerol.
Form/Appearance	Liquid
Concentration	1mg/ml
Storage	Shipped at 4°C. Store at -20 °C for one year. Avoid repeated freeze/thaw cycles.
Note	For research use only
Isotype	IgG
Clonality	Polyclonal
MW	51 kDa
Uniprot ID	Q96SW2
Dilution Range	IHC-P=1:100-500
Expiration Date	12 months from date of receipt.



Immunohistochemical staining of rat brai...



Immunohistochemical staining of rat test...