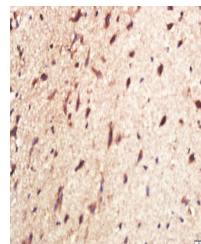


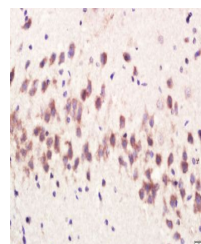
Product Datasheet

CPLX1 antibody (orb156445)

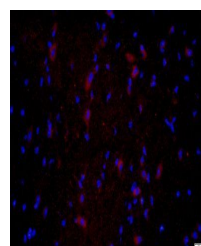
Description	CPLX1 antibody
Species/Host	Rabbit
Reactivity	Mouse, Rat
Conjugation	Unconjugated
Tested Applications	IF, IHC-P, WB
Immunogen	KLH conjugated synthetic peptide derived from human CPLX1 (31-100/134 aa)
Target	CPLX1
Preservatives	0.01M TBS(pH7.4) with 1% rAlbumin, 0.03% Proclin300 and 50% Glycerol.
Form/Appearance	Liquid
Concentration	1mg/ml
Storage	Shipped at 4°C. Store at -20 °C for one year. Avoid repeated freeze/thaw cycles.
Note	For research use only
Isotype	IgG
Clonality	Polyclonal
MW	15 kDa
Uniprot ID	O14810
Dilution Range	WB=1:500-2000, IHC-P=1:100-500, IF=1:100-500, IHC-F=1:100-500, ICC=1:100-500, ELISA=1:5000-10000
Expiration Date	12 months from date of receipt.



Immunohistochemical staining of Mouse br...



Immunohistochemical staining of rat brai...



Immunohistochemical staining of Mouse br...