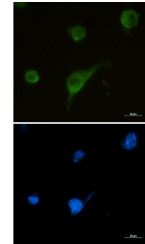


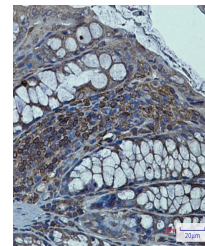
Product Datasheet

SNTA1 Antibody (orb1564201)

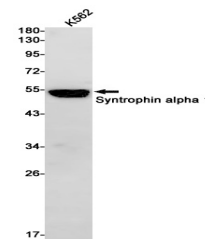
Description	SNTA1 Antibody
Species/Host	Rabbit
Reactivity	Human
Conjugation	Unconjugated
Tested Applications	ICC, IHC-Fr, IHC-P, WB
Immunogen	A synthetic peptide of human Syntrophin alpha 1
Target	SNTA1
Preservatives	50mM Tris-Glycine(pH 7.4), 0.15M NaCl, 40% Glycerol, 0.01% Sodium azide and 0.05% rAlbumin
Form/Appearance	Liquid
Concentration	0.3 mg/ml
Storage	Maintain refrigerated at 2-8°C for up to 2 weeks. For long term storage store at -20°C in small aliquots to prevent freeze-thaw cycles.
Note	For research use only
Isotype	IgG
Clonality	Monoclonal
MW	Calculated MW: 54 kDa; Observed MW: 54 kDa
Uniprot ID	Q13424
Dilution Range	WB: 1/500-1/1000 IHC: 1/50-1/100 IF: 1/50-1/200
Expiration Date	12 months from date of receipt.



Immunocytochemistry analysis of Syntrophin alpha 1



Immunohistochemistry analysis of paraffin-embedded tissue sections



Western blot analysis of Syntrophin alpha 1