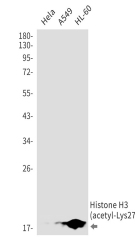


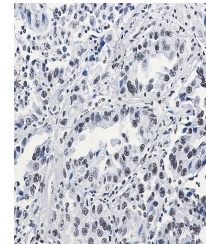
Product Datasheet

H3C1 Antibody (orb1564022)

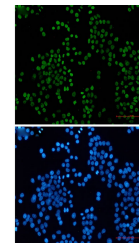
| | |
|----------------------------|---|
| Description | H3C1 Antibody |
| Species/Host | Rabbit |
| Reactivity | Human |
| Conjugation | Unconjugated |
| Tested Applications | ChIP, ICC, IHC-Fr, IHC-P, IP, WB |
| Immunogen | A synthetic acetyl-peptide corresponding to residues surrounding Lys27 of human Histone H3 |
| Target | H3C1 |
| Preservatives | 50mM Tris-Glycine(pH 7.4), 0.15M NaCl, 40% Glycerol, 0.01% Sodium azide and 0.05% rAlbumin |
| Form/Appearance | Liquid |
| Concentration | 0.3 mg/ml |
| Storage | Maintain refrigerated at 2-8°C for up to 2 weeks. For long term storage store at -20°C in small aliquots to prevent freeze-thaw cycles. |
| Note | For research use only |
| Isotype | IgG |
| Clonality | Monoclonal |
| MW | Calculated MW: 15 kDa; Observed MW: 15 kDa |
| Uniprot ID | P68431 |
| Dilution Range | WB: 1/500-1/1000 IHC: 1/50-1/100 IF: 1/50-1/200 IP: 1/20 ChIP: 1/20 |
| Expiration Date | 12 months from date of receipt. |



Western blot analysis of Histone H3 (ace...



Immunohistochemistry analysis of paraffi...



Immunocytochemistry analysis of Histone ...