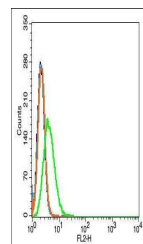


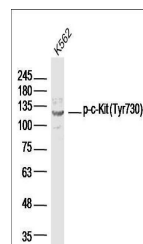
Product Datasheet

c-Kit (Phospho-Tyr730) antibody (orb156376)

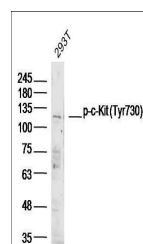
Description	c-Kit (Phospho-Tyr730) antibody
Species/Host	Rabbit
Reactivity	Human, Mouse
Conjugation	Unconjugated
Tested Applications	FC, IHC-P
Immunogen	KLH conjugated synthesised phosphopeptide derived from human c-Kit around the phosphorylation site of Tyr730 (VS(p-Y)VV)
Target	Phospho-c-Kit (Tyr730)
Preservatives	0.01M TBS(pH7.4) with 1% rAlbumin, 0.03% Proclin300 and 50% Glycerol.
Form/Appearance	Liquid
Concentration	1mg/ml
Storage	Shipped at 4°C. Store at -20 °C for one year. Avoid repeated freeze/thaw cycles.
Note	For research use only
Isotype	IgG
Clonality	Polyclonal
MW	105 kDa
Uniprot ID	P10721
Dilution Range	IHC-P=1:100-500, Flow-Cyt=1µg/Test, WB=1:500-2000, IHC-F=1:100-500, ICC=1:100-500, IF=1:100-500, ELISA=1:5000-10000
Expiration Date	12 months from date of receipt.



Flow cytometric analysis of Hela cell us...



Western blot analysis of K562 human cell...



Western blot analysis of 293T human cell...