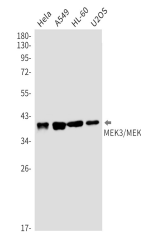


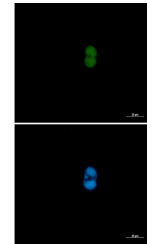
Product Datasheet

MAP2K3/MAP2K6 Antibody (orb1563568)

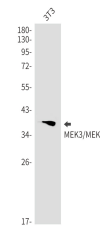
| | |
|----------------------------|-----------------------------------------------------------------------------------------------------------------------------------------|
| Description | MAP2K3/MAP2K6 Antibody |
| Species/Host | Rabbit |
| Reactivity | Human, Mouse |
| Conjugation | Unconjugated |
| Tested Applications | ICC, IP, WB |
| Immunogen | A synthesized peptide derived from human MEK3/MEK6 |
| Target | MAP2K3/MAP2K6 |
| Preservatives | 50mM Tris-Glycine(pH 7.4), 0.15M NaCl, 40% Glycerol, 0.01% Sodium azide and 0.05% rAlbumin |
| Form/Appearance | Liquid |
| Concentration | 0.3 mg/ml |
| Storage | Maintain refrigerated at 2-8°C for up to 2 weeks. For long term storage store at -20°C in small aliquots to prevent freeze-thaw cycles. |
| Note | For research use only |
| Isotype | IgG |
| Clonality | Monoclonal |
| MW | Calculated MW: 39,37 kDa; Observed MW: 39,37 kDa |
| Uniprot ID | P52564 , P46734 |
| Dilution Range | WB: 1/500-1/1000 IF: 1/50-1/200 IP: 1/20 |
| Expiration Date | 12 months from date of receipt. |



Western blot analysis of MEK3/MEK6 in He...



Immunocytochemistry analysis of MEK3/MEK...



Western blot analysis of MEK3/MEK6 in 3T...