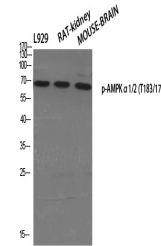


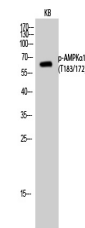
## Product Datasheet

### AAPK1/AAPK2 Antibody (orb1563453)

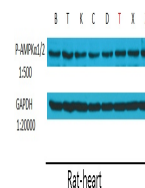
<b>Description</b>	AAPK1/AAPK2 Antibody
<b>Species/Host</b>	Rabbit
<b>Reactivity</b>	Human, Monkey, Mouse, Porcine, Rat
<b>Conjugation</b>	Unconjugated
<b>Tested Applications</b>	ELISA, ICC, IHC-Fr, IHC-P, WB
<b>Immunogen</b>	The antiserum was produced against synthesized peptide derived from human AMPK alpha around the phosphorylation site of Thr172.
<b>Target</b>	AAPK1/AAPK2
<b>Preservatives</b>	Liquid in PBS containing 50% glycerol, 0.5% rAlbumin and 0.02% sodium azide, pH 7.3.
<b>Form/Appearance</b>	Liquid
<b>Storage</b>	Maintain refrigerated at 2-8°C for up to 2 weeks. For long term storage store at -20°C in small aliquots to prevent freeze-thaw cycles.
<b>Note</b>	For research use only
<b>Isotype</b>	IgG
<b>Clonality</b>	Polyclonal
<b>MW</b>	Calculated MW: 64 kDa; Observed MW: 64 kDa
<b>Uniprot ID</b>	<a href="#">Q13131</a> , <a href="#">P54646</a>
<b>Dilution Range</b>	WB: 1/500-1/1000 IHC: 1/50-1/100 IF: 1/50-1/200 ELISA: 1/10000
<b>Expiration Date</b>	12 months from date of receipt.



Western blot analysis of Phospho-AMPK al...



Western blot analysis of Phospho-AMPK al...



Western blot analysis of Phospho-AMPK al...