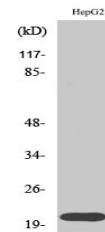


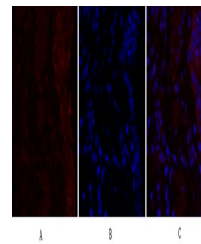
Product Datasheet

RHOA Antibody (orb1563436)

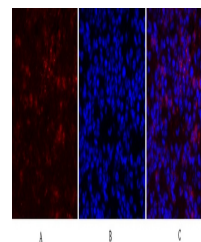
Description	RHOA Antibody
Species/Host	Rabbit
Reactivity	Human, Mouse, Rat
Conjugation	Unconjugated
Tested Applications	ELISA, ICC, IHC-Fr, IHC-P, WB
Immunogen	The antiserum was produced against synthesized peptide derived from human RhoA.
Target	RHOA
Preservatives	Liquid in PBS containing 50% glycerol, 0.5% rAlbumin and 0.02% sodium azide, pH 7.3.
Form/Appearance	Liquid
Storage	Maintain refrigerated at 2-8°C for up to 2 weeks. For long term storage store at -20°C in small aliquots to prevent freeze-thaw cycles.
Note	For research use only
Isotype	IgG
Clonality	Polyclonal
MW	Calculated MW: 22 kDa; Observed MW: 22 kDa
Uniprot ID	P61586
Dilution Range	WB: 1/500-1/1000 IHC: 1/50-1/100 IF: 1/50-1/200 ELISA: 1/10000
Expiration Date	12 months from date of receipt.



Western blot analysis of RhoA in HepG2 I...



Immunofluorescence analysis of RhoA in r...



Immunofluorescence analysis of RhoA in m...