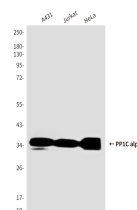


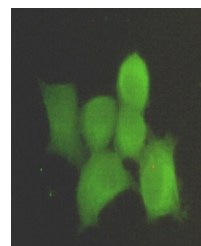
Product Datasheet

PPP1CA Antibody (orb1563411)

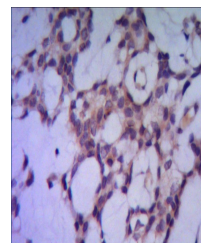
Description	PPP1CA Antibody
Species/Host	Mouse
Reactivity	Human
Conjugation	Unconjugated
Tested Applications	ICC, IHC-Fr, IHC-P, WB
Immunogen	Purified recombinant human PPP1A protein fragments expressed in E.coli.
Target	PPP1CA
Preservatives	Liquid in PBS containing 50% glycerol, 0.5% rAlbumin and 0.02% sodium azide, pH 7.3.
Form/Appearance	Liquid
Concentration	1.94 mg/ml
Storage	Maintain refrigerated at 2-8°C for up to 2 weeks. For long term storage store at -20°C in small aliquots to prevent freeze-thaw cycles.
Note	For research use only
Isotype	IgG1
Clonality	Monoclonal
MW	Calculated MW: 38 kDa; Observed MW: 38 kDa
Uniprot ID	P62136
Dilution Range	WB: 1/500-1/1000 IHC: 1/50-1/100 IF: 1/50-1/200
Expiration Date	12 months from date of receipt.



Western blot analysis of PPP1A in A431, ...



Immunocytochemistry analysis of PPP1CA in A431 cells.



Immunohistochemistry analysis of paraffin-embedded tissue sections.