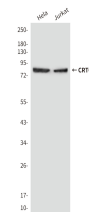


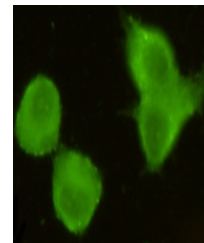
## Product Datasheet

### CRTC1 Antibody (orb1563383)

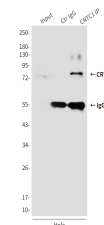
<b>Description</b>	CRTC1 Antibody
<b>Species/Host</b>	Mouse
<b>Reactivity</b>	Human
<b>Conjugation</b>	Unconjugated
<b>Tested Applications</b>	FC, ICC, IP, WB
<b>Immunogen</b>	Purified recombinant human MECT1 / Torc1 protein fragments expressed in E.coli.
<b>Target</b>	CRTC1
<b>Preservatives</b>	Liquid in PBS containing 50% glycerol, 0.5% rAlbumin and 0.02% sodium azide, pH 7.3.
<b>Form/Appearance</b>	Liquid
<b>Concentration</b>	5.5 mg/ml
<b>Storage</b>	Maintain refrigerated at 2-8°C for up to 2 weeks. For long term storage store at -20°C in small aliquots to prevent freeze-thaw cycles.
<b>Note</b>	For research use only
<b>Isotype</b>	IgG2b
<b>Clonality</b>	Monoclonal
<b>MW</b>	Calculated MW: 67 kDa; Observed MW: 78 kDa
<b>Uniprot ID</b>	<b>Q6UUV9</b>
<b>Dilution Range</b>	WB: 1/500-1/1000 IF: 1/50-1/200 IP: 1/20 FC: 1/50-1/100
<b>Expiration Date</b>	12 months from date of receipt.



Western blot analysis of MECT1 / Torc1 i...



Immunocytochemistry analysis of CRTC1 in...



Immunoprecipitation analysis of CRTC1 in...