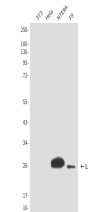


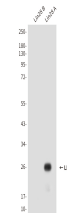
Product Datasheet

LIN28A Antibody (orb1563341)

Description	LIN28A Antibody
Species/Host	Mouse
Reactivity	Human, Mouse
Conjugation	Unconjugated
Tested Applications	WB
Immunogen	Purified recombinant human LIN28A protein fragments expressed in E.coli
Target	LIN28A
Preservatives	Liquid in PBS containing 50% glycerol, 0.5% rAlbumin and 0.02% sodium azide, pH 7.3.
Form/Appearance	Liquid
Concentration	0.5 mg/ml
Storage	Maintain refrigerated at 2-8°C for up to 2 weeks. For long term storage store at -20°C in small aliquots to prevent freeze-thaw cycles.
Note	For research use only
Isotype	IgG2a
Clonality	Monoclonal
MW	Calculated MW: 23 kDa; Observed MW: 26 kDa
Uniprot ID	Q9H9Z2
Dilution Range	WB: 1/500-1/1000
Expiration Date	12 months from date of receipt.



Western blot analysis of LIN28 in NTERA ...



Western blot analysis of LIN28A (2C1) in...